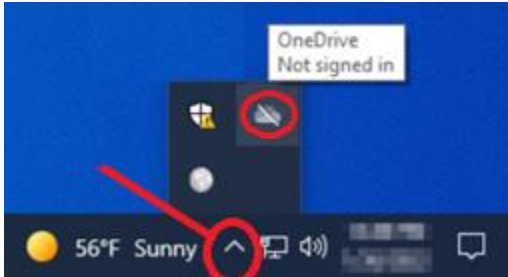


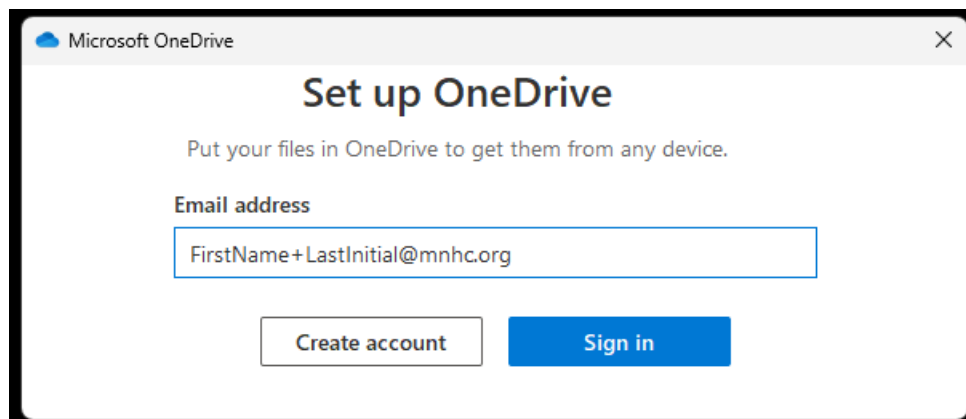
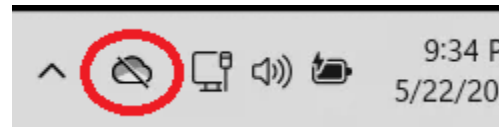
Setup One Drive And Sync Your Desktop Icons To All Computers You Use.

Click on the Gray **One Drive** cloud icon from the Task Bar and **Sign In**.

Windows 10

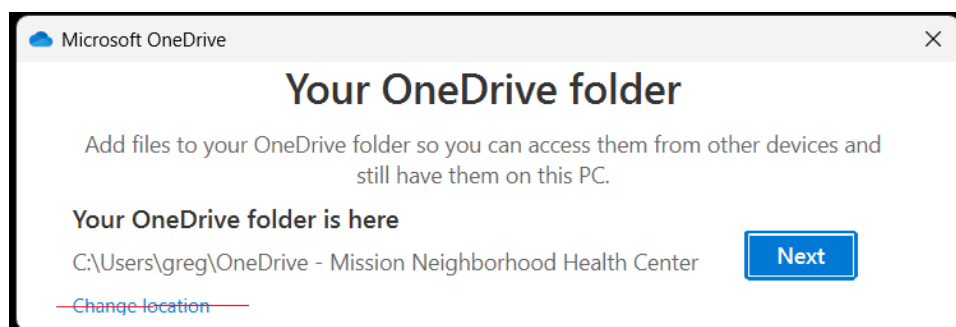


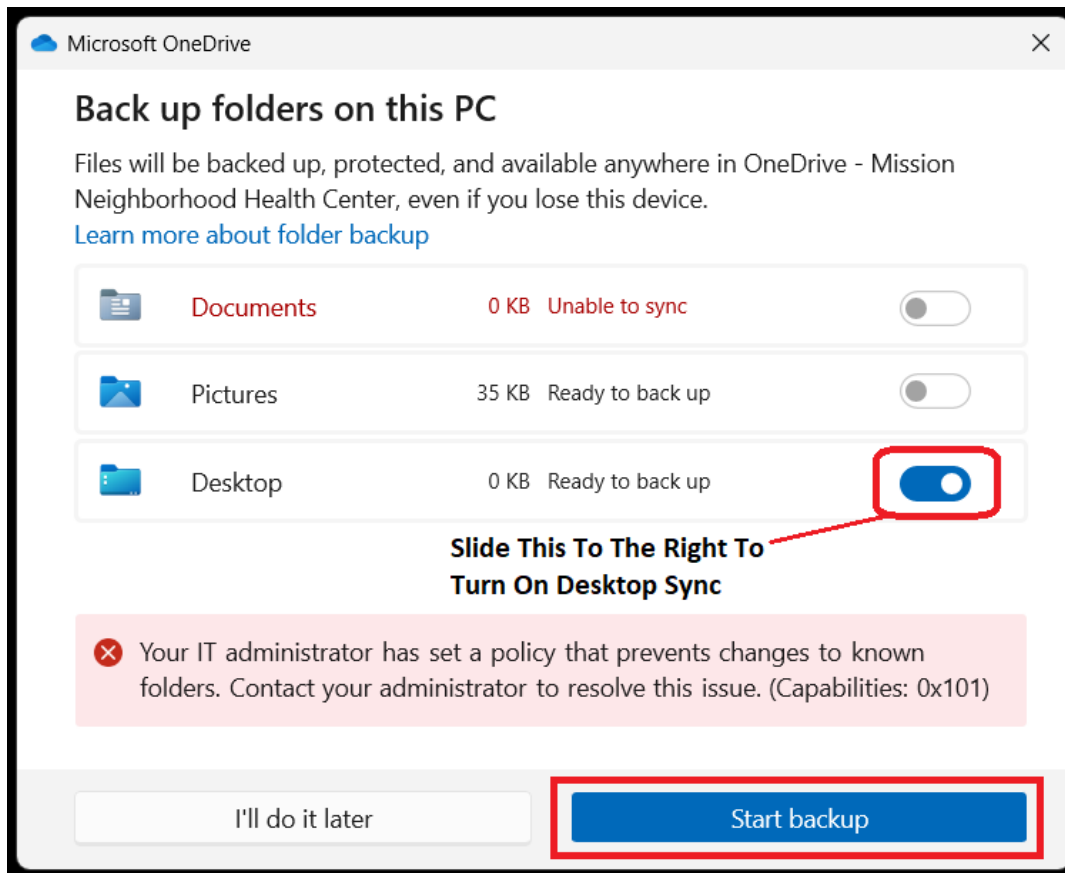
Windows 11



If you need Help Logging in, See the Home Page on [DASMNHC.com](https://dasmnhc.com)

Or the Link Below





Documents Are Already Automatically Synced On The Network.

Click Next or Done until One Drive closes or exits.

Understanding Microsoft OneDrive Syncing

- OneDrive syncing can take anywhere from 30 minutes to several hours, depending on the amount of data.
- OneDrive is generally slower than Google Drive, and syncing is not immediate.
- Repeat this process on every computer to sync your desktop icons.
- Note: This will merge the desktops of all computers where OneDrive is running. As a result, you may see duplicate shortcut icons.